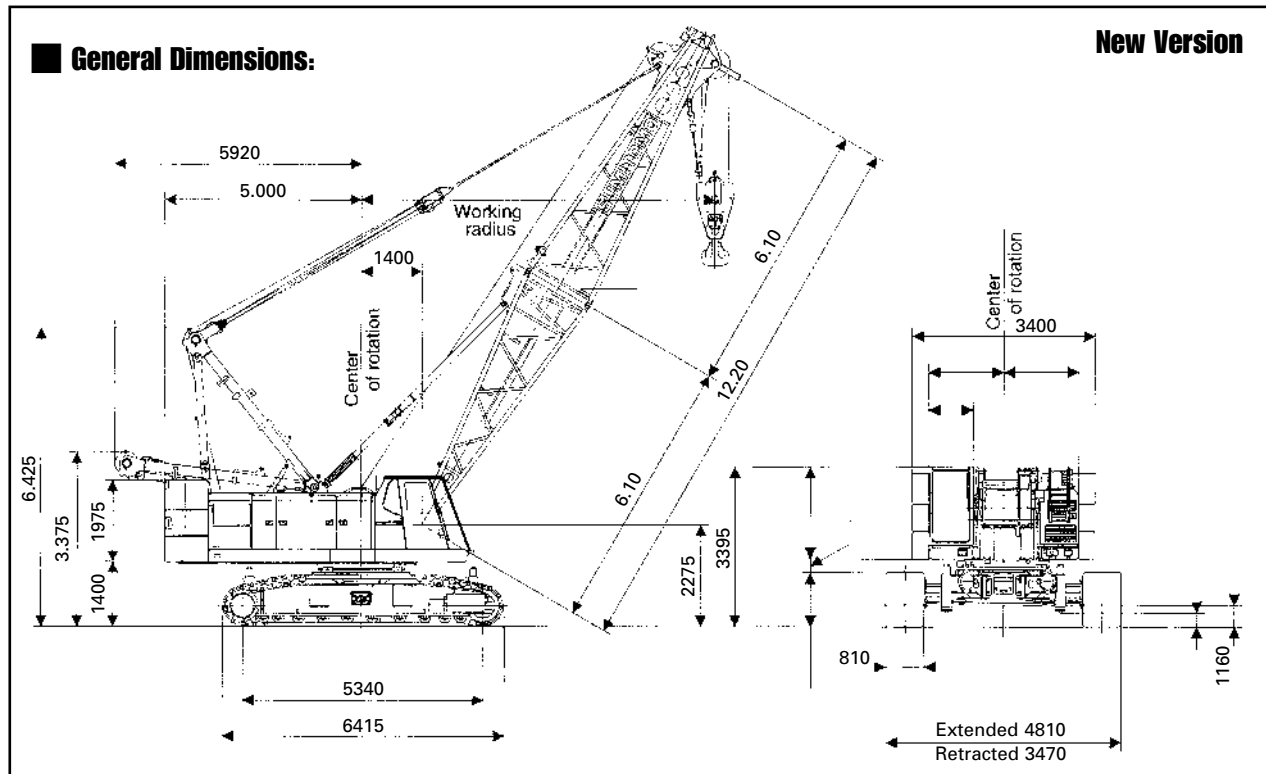


SUMITOMO SC 800



Max-Lift & Radius	80t 3.8m
Min boom Length	12.20m
Max Boom Length	57.90m
Fly Jib Lengths	9.15m - 18.30m
Max Boom with Fly	51.85m - 18.30m
Main & Aux Winch Speed Hoist & Lowering	60m/min
Boom Hoist & Lowering	40m/min
Swing Speed	2.5RPM
Travel Speed Max	1.3Km/Hr
Engine Make & Model	Mitsubishi 6D22CT
Rated Output	183.9Kw/2.20min (250PS/2.200RPM)
Gradient	30% (17°)
Ground Pressure	0.91Kg.cm ²
Working Weight	84.4t

Hook Block Weights			
80t	50t	30t	10t
1.1t	0.84t	0.64t	0.40t

No of Falls	LOAD t
8	80.0
7	61.2
5	45.4
4	35.7
3	29.6
2	21.1
1	10



HEAD OFFICE:
N R C PLANT LTD.
NEAGRON HOUSE, STANFORD ROAD,
ORSETT, ESSEX. RM16 3BX
Telephone: 01375 361616
Fax: 01375 361818

sales@nrcplant.co.uk
www.nrcplant.co.uk

SC 800 LIFTING CAPACITIES MAIN BOOM

(in metric tons)

Working radius (m)	Boom length (m)															
	12.20	15.25	18.30	21.35	24.40	27.45	30.50	33.55	36.60	39.65	42.70	45.75	48.80	51.85	54.90	57.90
3.8	80.0															
4.0	80.0															
4.5	73.2	73.1														
5.0	61.5	61.3	61.2													
6.0	45.8	45.6	45.5	45.4	45.3											
7.0	36.3	36.2	36.0	35.9	35.8	35.7										
8.0	30.3	30.2	30.1	29.9	29.8	29.7	29.6	29.4								
9.0	25.7	25.7	25.6	25.5	25.3	25.2	25.1	24.9	24.8							
10.0	22.1	22.0	21.8	21.8	21.7	21.7	21.6	21.4	21.3	21.1	21.0					
12.0	17.3	17.2	17.0	17.0	17.0	16.9	16.9	16.7	16.6	16.5	16.3	16.2	16.1	15.9		
14.0		14.0	13.9	13.9	13.9	13.8	13.7	13.5	13.4	13.3	13.0	12.9	12.8	12.6	12.5	
16.0			11.5	11.5	11.5	11.3	11.3	11.2	11.1	10.9	10.7	10.5	10.4	10.3	10.2	
18.0				9.9	9.7	9.7	9.6	9.5	9.4	9.2	9.1	9.0	8.8	8.7	8.6	8.4
20.0				8.5	8.5	8.3	8.1	8.1	8.0	7.8	7.7	7.6	7.4	7.4	7.3	7.2
22.0					7.5	7.4	7.3	7.1	7.0	6.9	6.7	6.6	6.5	6.4	6.2	6.1
24.0						6.4	6.3	6.2	6.0	5.9	5.8	5.7	5.5	5.4	5.3	5.1
26.0							5.6	5.4	5.3	5.3	5.1	5.0	4.9	4.8	4.5	4.3
28.0							5.0	4.9	4.8	4.6	4.5	4.4	4.1	4.1	3.8	3.5
30.0								4.4	4.2	4.1	4.0	3.8	3.5	3.5	3.1	2.9
32.0									3.7	3.6	3.4	3.3	3.0	3.0	2.7	2.4
34.0										3.0	3.0	2.9	2.5	2.4	2.2	1.8
36.0										2.7	2.6	2.3	2.0	1.9	1.6	1.3
38.0											2.2	1.9	1.6	1.5	1.2	
No. of part line	8	8	7	5	5	4	3	3	3	3	2	2	2	2	2	2

Notes

- Capacities shown are in metric tons and are determined according to BS 1757 - over the side - with machine standing level on firm supporting surface under ideal job conditions. Deductions from the lifting crane capacities must be made for weight of hook block.
- When handling load off main boom peak sheaves in case of mounting jib on boom, the following deductions in machine lifting capacities must be made.
- Maximum fly jib capacity 10 tonnes

Kind of hook block	80t	50t	30t	10t
Weight of hook block (t)	1.1	0.84	0.64	0.40

Jib length (m)	9.15	13.70	18.30
Weight to be deducted (t)	1.5	2.1	2.80

WORKING WEIGHT AND GROUND PRESSURE

Shoe width	Weight	Pressure
810mm	84.4t	0.91 Kg/cm ²